

FLEX - PLUS 4000-6000

Led Strip



Alimentazione / Operating Voltage	24 V
Potenza / Power	22 W/mt
Larghezza Pcb / Width Pcb	12 mm
Altezza / Height Stripe	2 mm
Lunghezza / Length Stripe	5000 mm
Taglio segmento/ Length per Cut	62 mm
N° LED	128 / mt
IP	20
Temperatura esercizio Storage Temperature	- 30° C - + 70°C
Lifetime	L70B20 50000H

	Flusso Luminoso Luminous Flux	Efficienza Efficiency	Colore Luce Led Color
DA-PLUS-4000-6000	3560 lm/mt	135 lm/W	6000 K



Via Cadorna, 40/42
20032 Cormano (MI)
Tel. +39 02 84269630
Fax +39 02 84269631
info@dadalighting.com
www.dadalighting.com

FLEX - PLUS 4000-6000

Led Strip

Light efficiency:



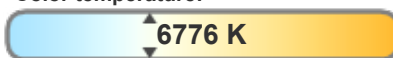
Output: 3560 lm

Light quality:



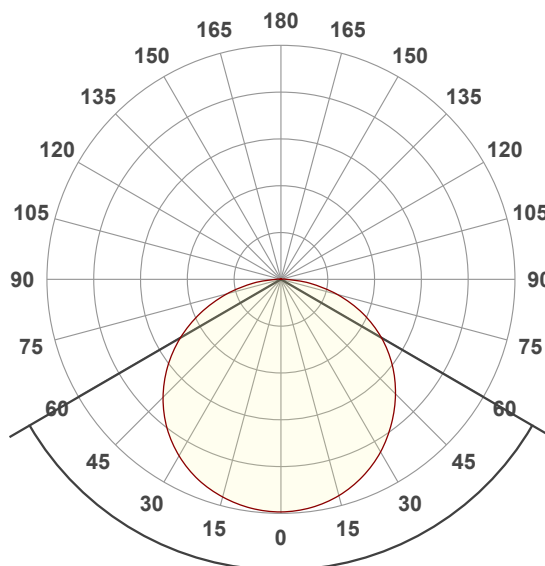
Peak: 1135 cd

Color temperature:



Power: 22,0 W

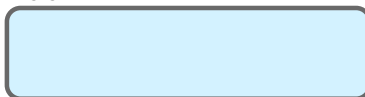
24,0V @ 0,917A



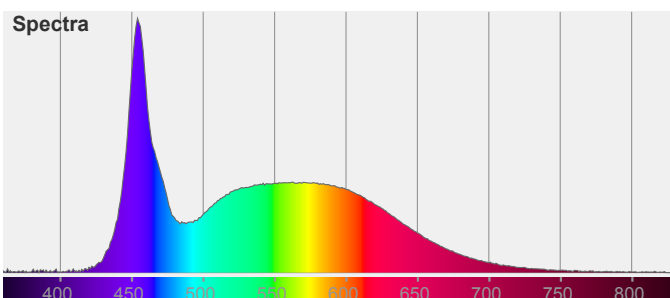
Beam angle

119,7°

Color

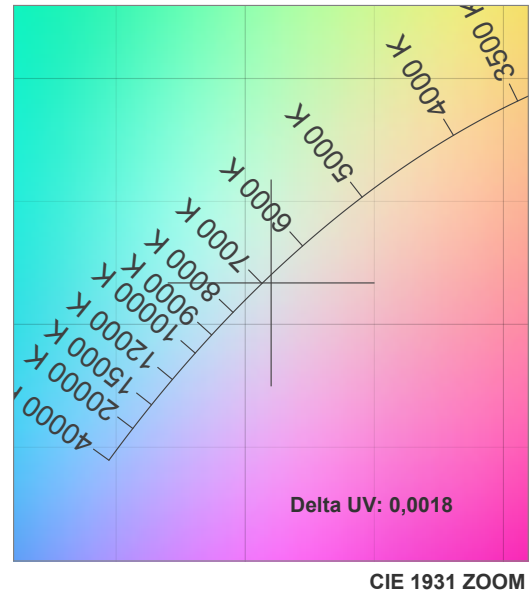
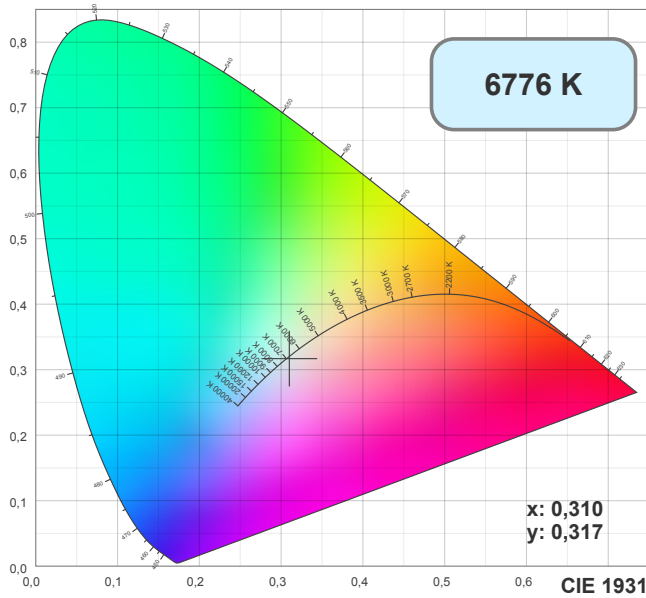


CIE1931
x: 0,310
y: 0,317

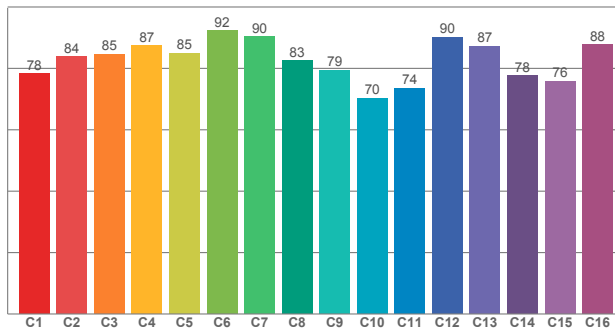


FLEX - PLUS 4000-6000

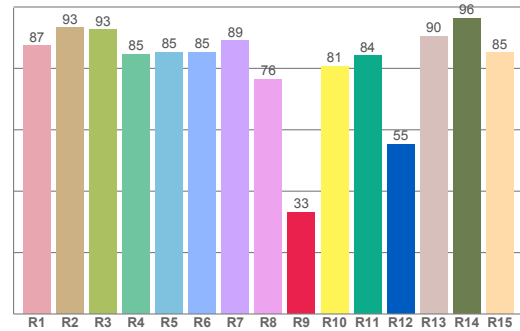
Led Strip



TM30: 82,9



CRI: 86,8 (R1-R8)



CRI R values, only R1-R8 are used to calculate final CRI value

R1	R2	R3	R4	R5	R6	R7	R8	R9	R10	R11	R12	R13	R14	R15
87,45	93,33	92,63	84,65	85,25	85,29	89,01	76,47	33,17	80,66	84,09	55,26	90,48	96,36	85,16

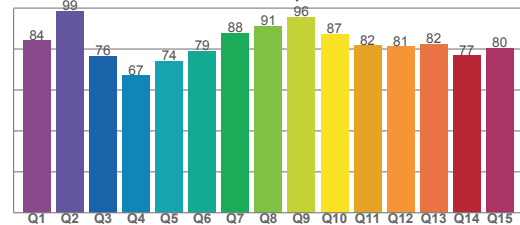
TM30 C values, 16 binned values out of total of 99 C values

C1	C2	C3	C4	C5	C6	C7	C8	C9	C10	C11	C12	C13	C14	C15	C16
78,28	83,85	84,67	87,41	84,99	92,22	90,39	82,56	79,46	70,30	73,58	90,15	87,20	77,53	75,89	87,68

CQS Q values

Q1	Q2	Q3	Q4	Q5	Q6	Q7	Q8	Q9	Q10	Q11	Q12	Q13	Q14	Q15
84,11	98,66	76,33	67,02	74,00	79,00	87,62	91,13	95,66	87,33	81,70	81,14	82,25	76,81	80,32

CQS: 81,1

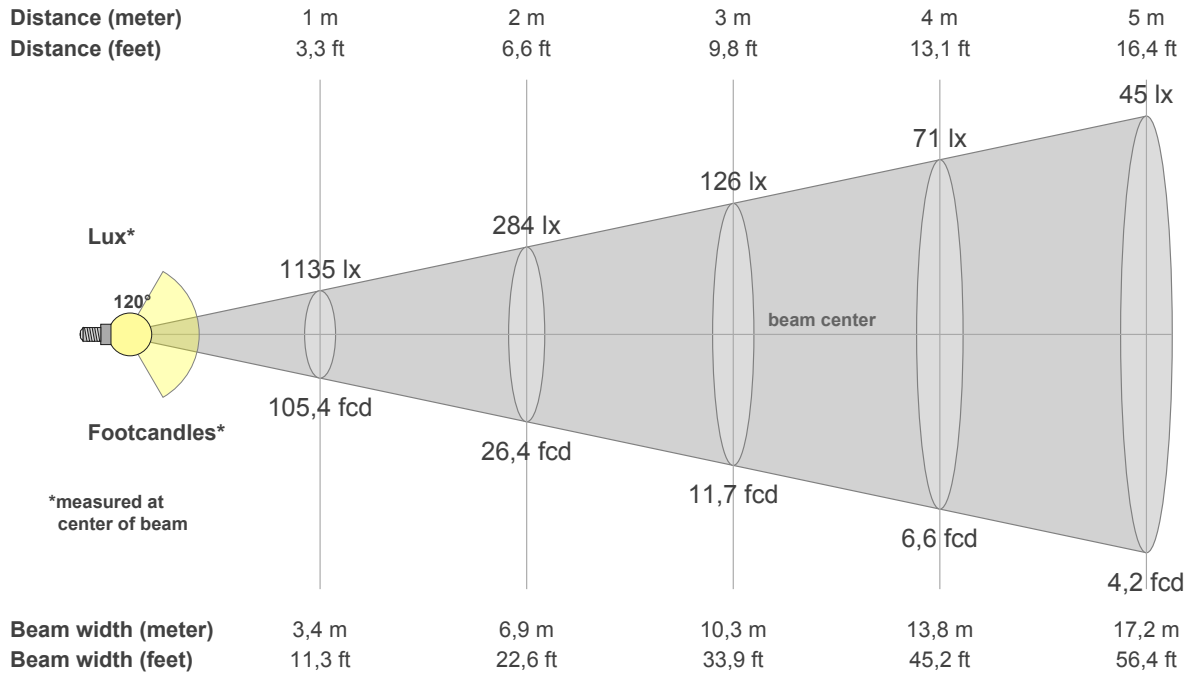


Color parameters

CCT	CRI	CRI R9	TM30 Rf	TM30 Rg	CQS	x	y	u	v	Duv
6776 K	86,8	33,2	82,9	94,8	81,1	0,3	0,3	0,2	0,3	-0,0050

FLEX - PLUS 4000-6000

Led Strip



Intensities in 0° c-plane

0°	5°	10°	15°	20°	25°	30°	35°	40°	45°	50°	55°	60°	65°	70°	75°	80°	85°	90°	95°
1135	1127	1113	1092	1058	1018	972	915	854	790	720	644	564	475	382	285	188	102	28	11
100%	99%	98%	96%	93%	90%	86%	81%	75%	70%	63%	57%	50%	42%	34%	25%	17%	9%	2%	1%

Intensities in 0° c-plane

0°	5°	10°	15°	20°	25°	30°	35°	40°	45°	50°	55°	60°	65°	70°	75°	80°	85°	90°	95°
1135	1127	1113	1092	1058	1018	972	915	854	790	720	644	564	475	382	285	188	102	28	11
100%	99%	98%	96%	93%	90%	86%	81%	75%	70%	63%	57%	50%	42%	34%	25%	17%	9%	2%	1%

Intensities in 180° c-plane

0°	5°	10°	15°	20°	25°	30°	35°	40°	45°	50°	55°	60°	65°	70°	75°	80°	85°	90°	95°
1135	1129	1117	1099	1071	1036	994	941	880	813	735	652	564	469	371	273	178	95	26	9
100%	99%	98%	97%	94%	91%	88%	83%	78%	72%	65%	57%	50%	41%	33%	24%	16%	8%	2%	1%

Intensities in 180° c-plane

0°	5°	10°	15°	20°	25°	30°	35°	40°	45°	50°	55°	60°	65°	70°	75°	80°	85°	90°	95°
1135	1129	1117	1099	1071	1036	994	941	880	813	735	652	564	469	371	273	178	95	26	9
100%	99%	98%	97%	94%	91%	88%	83%	78%	72%	65%	57%	50%	41%	33%	24%	16%	8%	2%	1%

Beam angle 50%	Field angle 10%	Cutoff angle 2,5%	Intensity ratio in 120° cone	Intensity ratio in 90° cone
119,7°	168,0°	179,5°	74,9%	50,0%